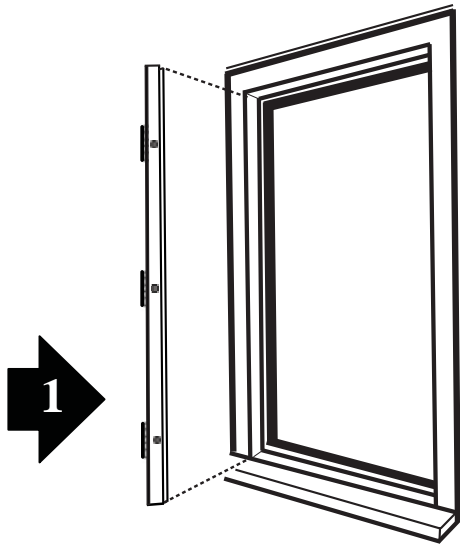




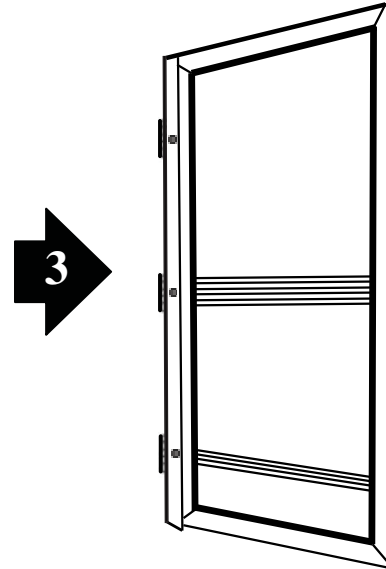
**TRU-FRAME®**  
A name you can build on.

## EXTRUDED SCREEN DOOR Installation Instructions

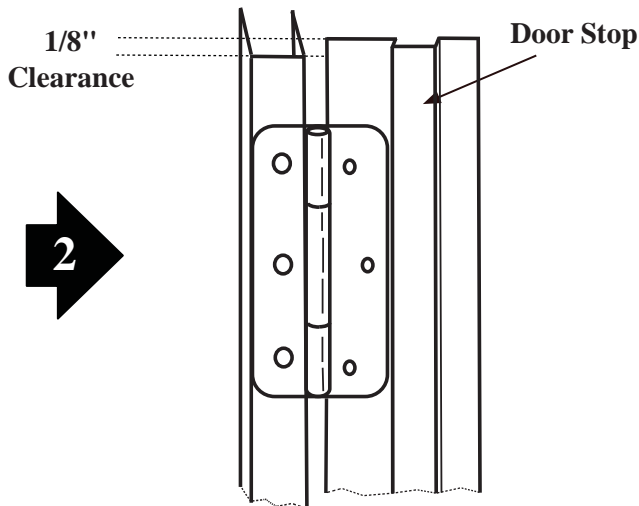
Read complete instructions thoroughly before starting step number 1.



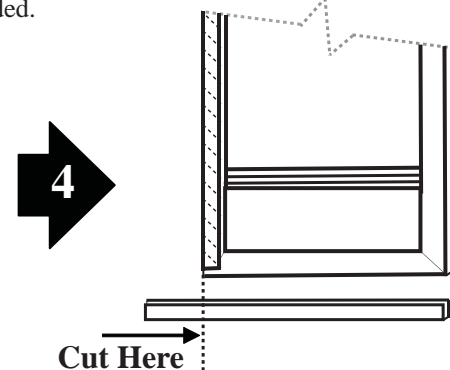
1. Measure height of opening on side where hinges will be fastened (normally same side as the hinges on main door). Cut the bottom of the hinge channel to this measured length, less 2-3/16". File all rough edges smooth. DO NOT cut hinge channel and disregard use of bottom channel if door opening height measures up to 1/4" over net screen door size.



3. Slip the screen door into the hinge channel. With pieces of cardboard, shim door for 3/16" clearance on latch side and 1/8" on top. On outside of door with 1/8" bit drill 2 holes through hinge channel as per illustration. (DO NOT drill completely through door) Follow this same procedure on inside of door and also drilling a third hole at the same height as the push-bar. Insert sheet metal screws provided.



2. Locate position of hinges on door frame while allowing 1/8" clearance at top of hinge channel. Mount hinges with wood screws provided.



4. Measure full width of door from outside edge of hinge channel to outside edge of door frame. Cut bottom channel to this measurement and file all rough edges. Slip channel on bottom of door and adjust up or down to permit minimum clearance with the threshold while maintaining the channel flush at each end. On the inside, drill 1/8" holes 4 1/2" from each end of the bottom channel, as close to the bottom edge as possible, and insert sheet metal screws.

5. To install door latch and strike close the door against the stop and follow instructions on paper template in hardware box.

6. To install air closer follow instructions printed in the hardware box.

### TOOLS REQUIRED:

Hacksaw, file, screwdriver, and drill with 1/8" and 1/4" bits.